

# Xicochi xicochi à4

Gaspar Fernández  
(~1565 - 1629)

Canto

Alto

Tenor

Basso

12

23

35

Xico - chi xi-co - chi xico -

Xico - chi xico - chi xico - chixi - co-chi, xico - chico - netzin - tle

Xico - chi xi-co - chi xico -

Xico - chi xi-co - chi xico -

chico - netzin - tle caomiz huihui jo-co

co - netzin - tle caomiz huihui jo-co in an - ge-los me,

chico - netzin - tle caomiz hui - hui jo -

chico - netzin - tle caomiz huihui jo-co

in an - ge los - me, caomiz huihui jo-co in an - ge-los me, in an - gelos me,

caomiz huihui jo-co in an - ge-los me, in an - gelos me,

in an - ge los - me, caomiz huihui jo-co in an - ge-los me, in an - gelos me,

in an - ge los - me, caomiz huihui jo-co in an - ge-los me, in an - gelos me,

in an - ge-los me. Al - le - lu - ia Al - le - lu - ia.

in an - ge - los me. Al - le - lu - ia Al - le - lu - ia.

in an - ge - los me. Al - le - lu - ia Al - le - lu - ia.

in an - ge-los me, Al - le - lu - ia Al - le-lu - ia.

## Xicochi xicochi à4

Gaspar Fernández  
(~1565 - 1629)

Xico - chi xi-co - chi



xi-co - chi co - net-zin - tle



cao-miz hui-hui jo-co in an - ge los -



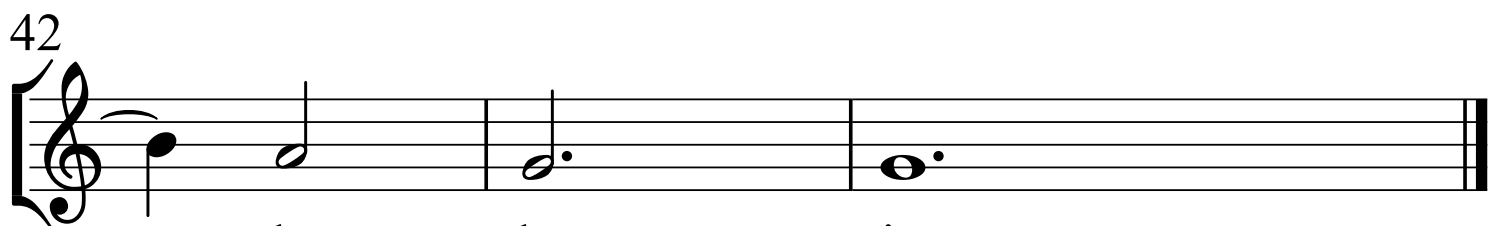
me, cao-miz hui-hui jo-co in an -



ge - los me, in an - ge-los me, in an -



ge-los me. Al - le - lu - ia Al-

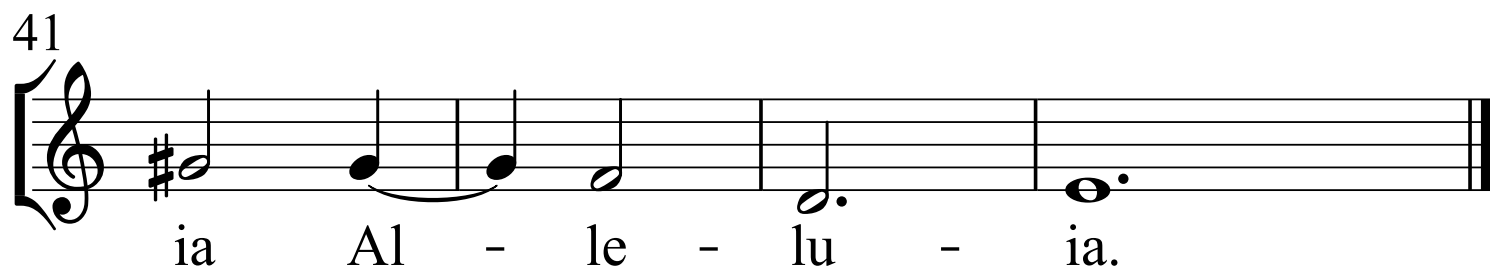
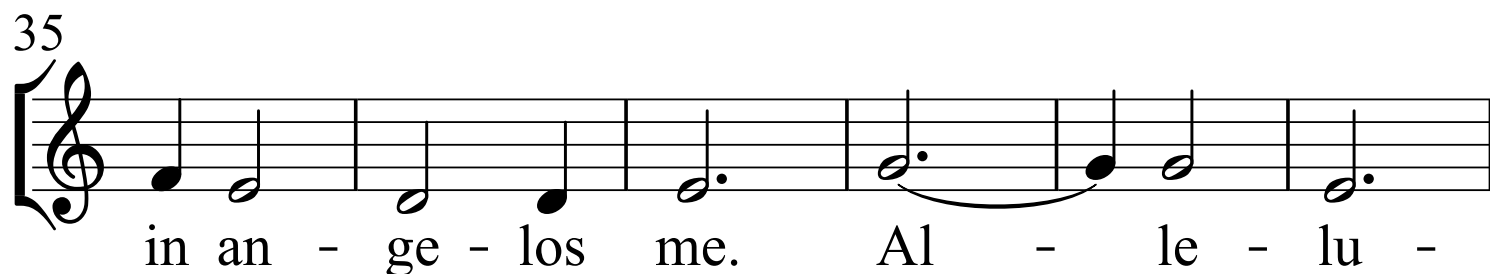
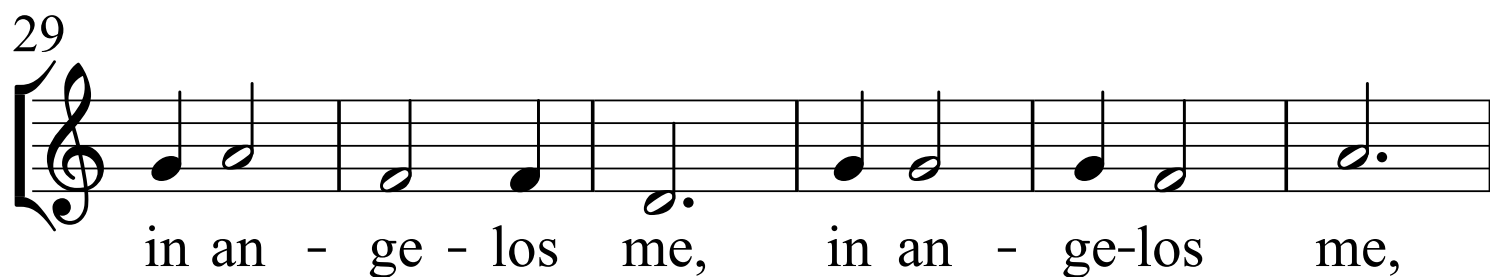
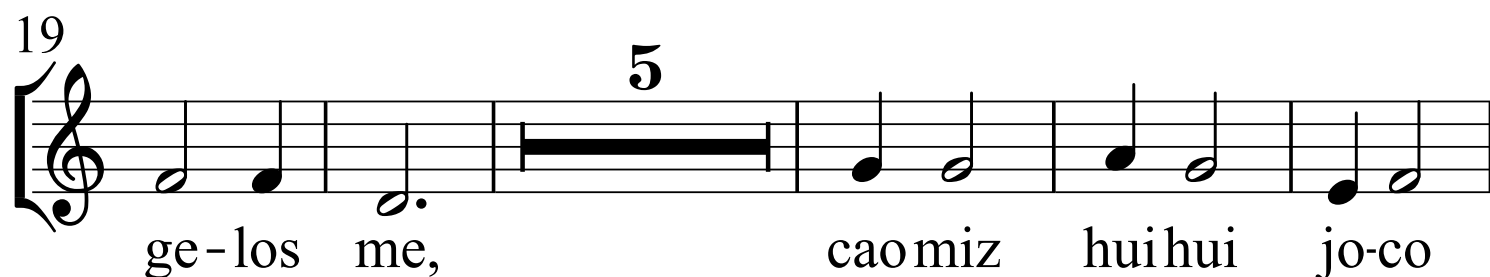
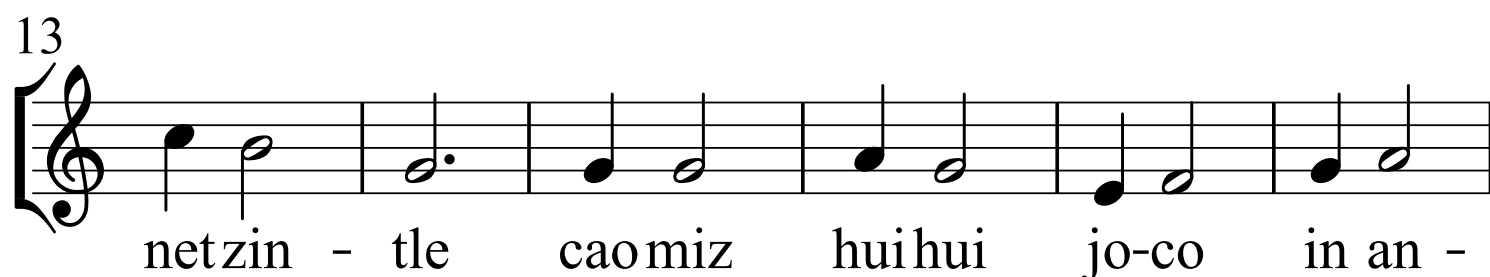
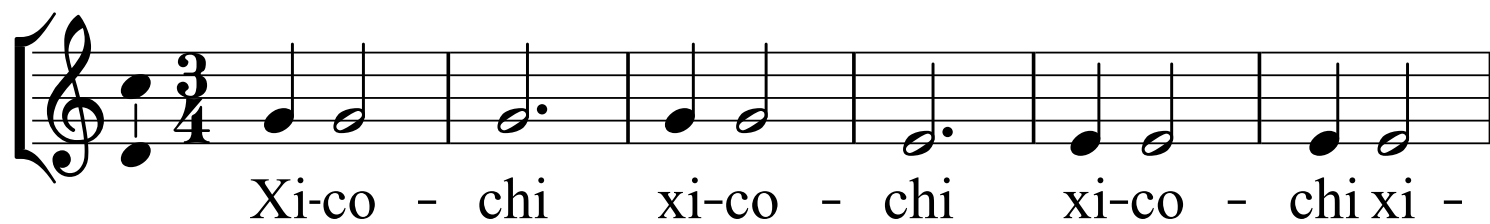


- le - lu - ia.

Alto

# Xicochi xicochi à4

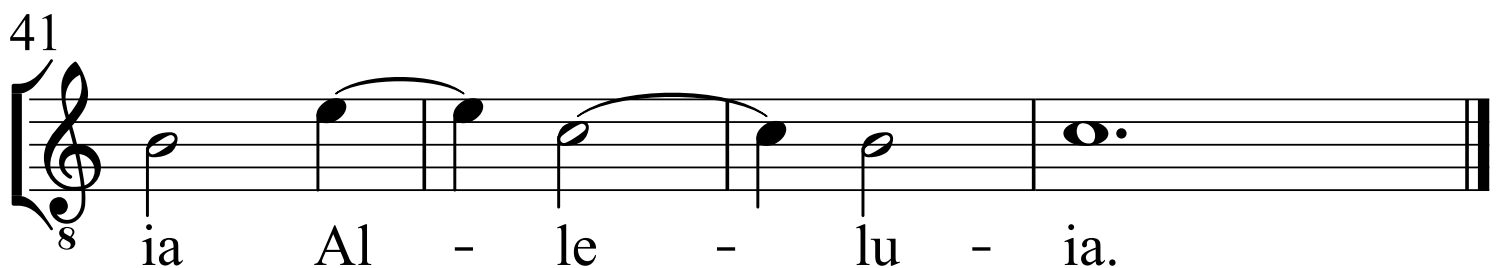
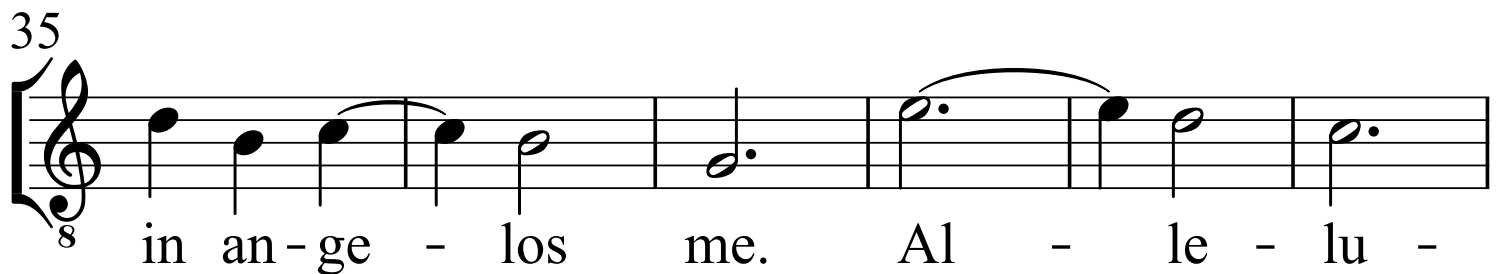
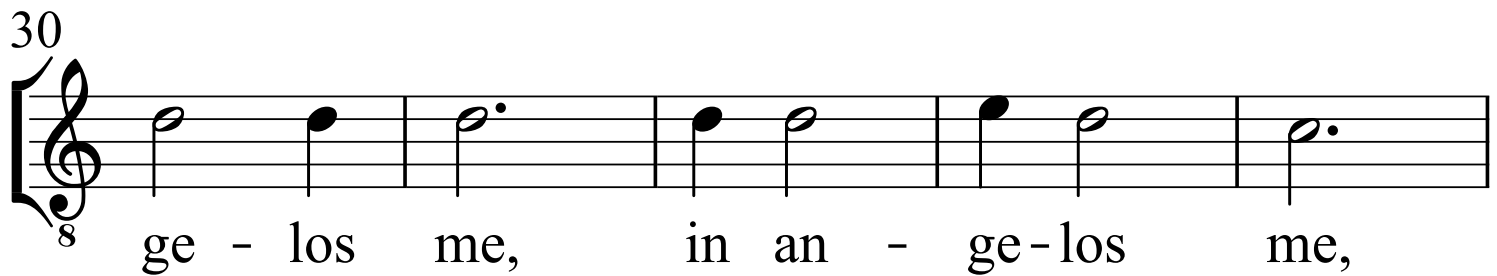
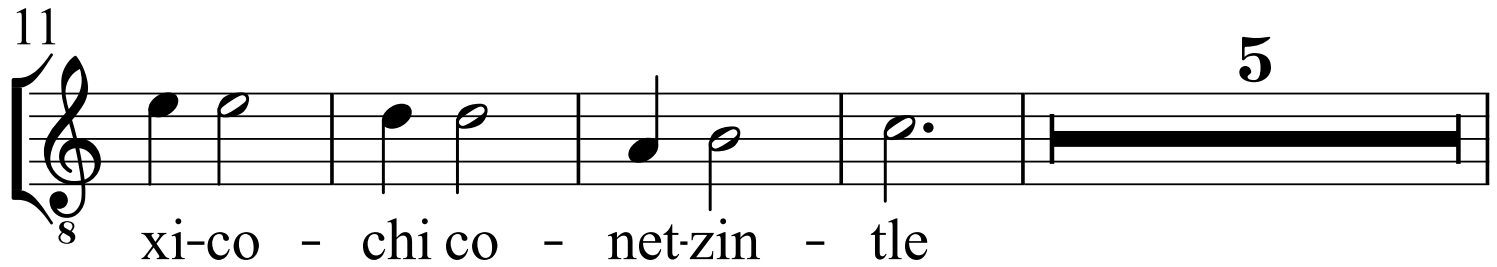
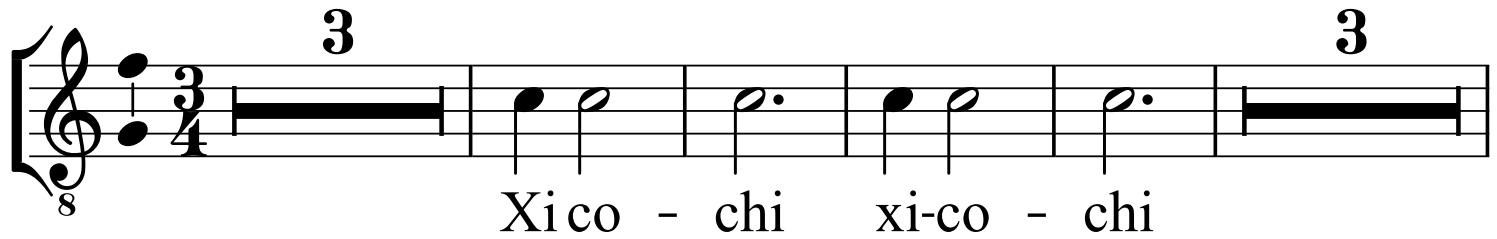
Gaspar Fernández  
(~1565 - 1629)



Tenor

# Xicochi xicochi à4

Gaspar Fernández  
(~1565 - 1629)



Basso

# Xicochi xicochi à4

Gaspar Fernández  
(~1565 - 1629)

